

MAPPING SURVEY

Decide where you want to conduct your survey.

1



2

Swim to and identify one edge of the habitat.

Ensure that your GPS has a signal. Start recording your track and begin the survey.

3

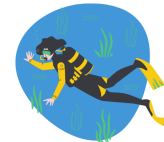


4

Mark the start position with a SMB to help you navigate back to it.

Swim around the seagrass, keep close to the boundary with the GPS directly above you.

5



6

Take photos of the habitat to provide evidence of its presence.

Complete the circle, stop recording the track on the GPS and save.

7



8

Measure the length and height of the seagrass blades in the bed.

Record the time and depth of your survey.

9



10

Upload your data on the Great Seagrass Survey portal.

